

# USING INNOVATIVE SPATIAL ANALYSIS TO HELP LOCATE WOMEN'S AND GIRLS' HEALTH HUBS

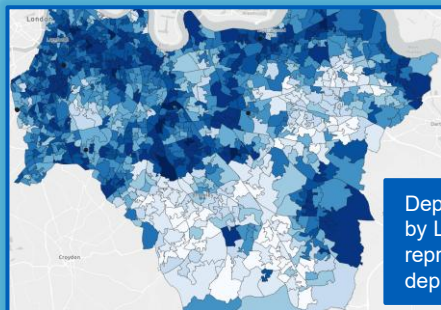
## INTRODUCTION

As part of 2024/25 Operational Planning guidance, **every ICB** needed to **establish** and develop at least **one women and girls' health hub**.

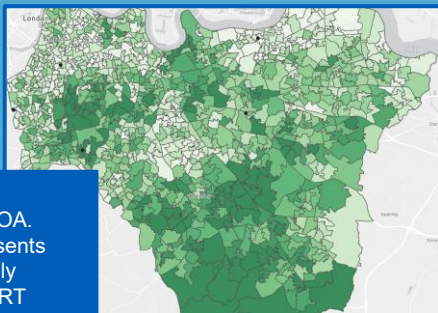
- ◆ Women and girls' health hubs bring together doctors, nurses and other specialists to provide a **central care location** for a range of conditions including **menopause, contraception, preconception health** and **period or menstrual problems** such as heavy menstrual bleeding.
- ◆ We had data on **Long-Acting Reversible Contraceptives (LARC), Heavy Menstrual Bleeding** and **Menopause** from **primary and secondary care**.
- ◆ This data was reported in a **PowerBI** dashboard at **borough level** – highlighting the **need** for a hub in **Lambeth and Greenwich**.

## OBJECTIVE

Present this data **visually** at a **more granular level** (Lower Super Output Area) to identify **which sites** in **Lambeth and Greenwich** could be **most beneficial** for women and girls in South East London.

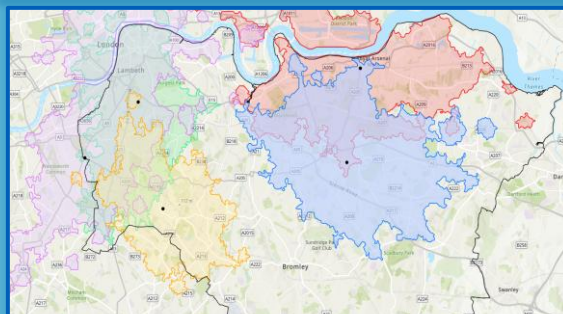


Number of HRT prescriptions by LSOA. Darker green represents LSOAs with relatively higher number of HRT prescriptions



## GEOSPATIAL ANALYSIS

- ◆ **Create a narrative**, bringing together our data from a range of sources so that stakeholders could **easily compare metrics** across time or demographic factors, such as deprivation.
- ◆ Consideration for the **safest way** to handle a large amount of **patient-sensitive data**.
  - ◆ Result was an **aggregated dataset** split by LSOA, Index of Multiple Deprivation (IMD) and activity type.
- ◆ Focus on **accessibility** and relationship between **service activity and deprivation**.



30-minute public transport travel area to possible hub sites

## FINDINGS

- ◆ The data showed a striking **relationship** between **HRT prescription volumes** and **deprivation**
  - ◆ The **largest number** of HRT prescriptions were concentrated in the **least deprived** deciles.
  - ◆ This trend is not surprising in boroughs with older populations. However, this **trend** is also seen in South East London **boroughs** with **younger populations**.
- ◆ Hub site locations need to provide **accessible care** for patients living in the **most deprived areas**, while also considering **accessibility by public transportation**.
- ◆ Decision to operate a **virtual triage** model in **Lambeth** with plans to **transition to an in-person** hub within a GP practice and use an existing **community health centre** in **Greenwich**

Jessica Roe, Head of Analytics, [jessica.roe@selondonics.nhs.uk](mailto:jessica.roe@selondonics.nhs.uk)  
Julia Poduska, Senior Health Intelligence Analyst, [julia.poduska@selondonics.nhs.uk](mailto:julia.poduska@selondonics.nhs.uk)