

An introduction to the Work and Health Regional Data Explorer



Sylvia Godden, Mia Moilanen, Simon Orange, Greg Barbosa, Nicola Corrigan¹.
Local Knowledge and Intelligence Service (LKIS), Department of Health and Social Care ¹Office Health Improvement and Disparities, OHID North East Yorkshire (NEY) Regional Team. Contact: lkis@dhsc.gov.uk

Introduction

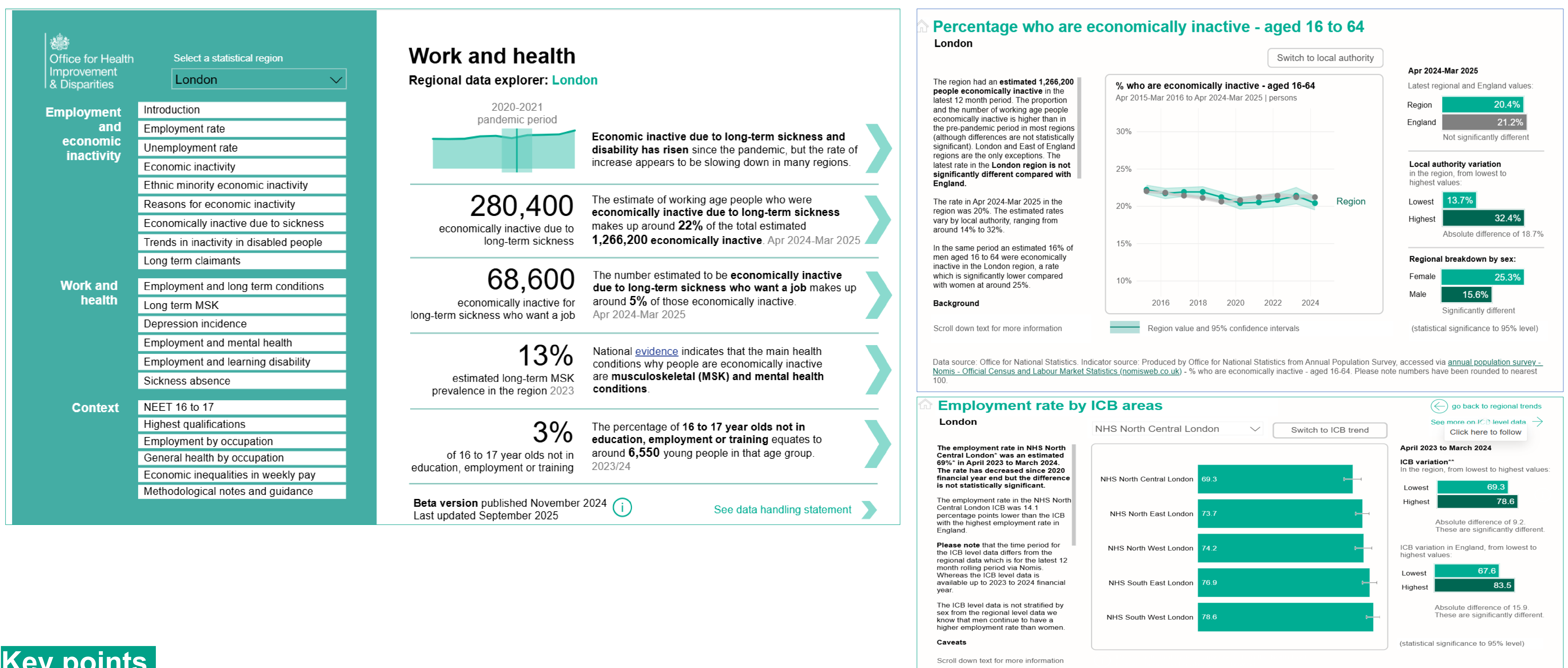
Evidence is that good work improves health and wellbeing in both economic terms and quality of life. This is defined as having a safe and secure job with good hours and conditions, management support, training and development opportunities, as recognised in the [10 Year Health Plan for England](#). There is a strong economic and public health case for action, as combined costs from worklessness and sickness amount to around £100 billion annually. Addressing and removing barriers requires collaboration between partners across all sectors at both national and local level. The purpose of the interactive [Work and health regional data explorer](#) is to provide OHID Regional Work and Health leads with clear, accessible data and intelligence about employment activity to support their local systems.

Methods

The explorer is updated quarterly. Topics are divided into general employment and economic inactivity statistics, accompanied by detailed health data and contextual information. This poster demonstrates statistics for London.

Tools and data sources utilised

Data is sourced via ONS Nomis and DHSC public health profiles via Fingertips API, already in the public domain. It is developed as a PowerBi tool, with methodological notes and guidance included. Semantic models were applied to create an easy to refresh, reproducible template. Charts are accompanied with dynamic narrative and context to tell a story, aimed at supporting accessibility and data interpretation. The explorer includes recent trends for the nine statistical regions with comparison to England, alongside local authority and ICB variation for the latest twelve-month period where available. A breakdown by sex is also included.



Key points

The explorer includes longer term trends by region and comparisons for each local authority for the latest twelve-month period, as well as combined authorities, where available. It curates economic inactivity, work and health indicators into one interactive report, providing an overview for regions to help shape plans.

Discussion and outcomes

Economic inactivity due to long term illness has been on the rise across all regions, with variation accounting for inequalities in health. It is important that people able to work are supported to gain employment and maintain economic independence for themselves and their families, especially as they age. This of particular importance for individuals with long-term conditions and disabilities due to the barriers they face gaining employment and retaining a job.

The explorer is aimed at work and health networks, policy and commissioning teams. The latest iteration released in September, to be updated in December 2025, included ICB level indicators to support their role in strategies to improve economic inactivity bringing in data by ONS Local.

LKIS are keen to receive feedback and suggestions.